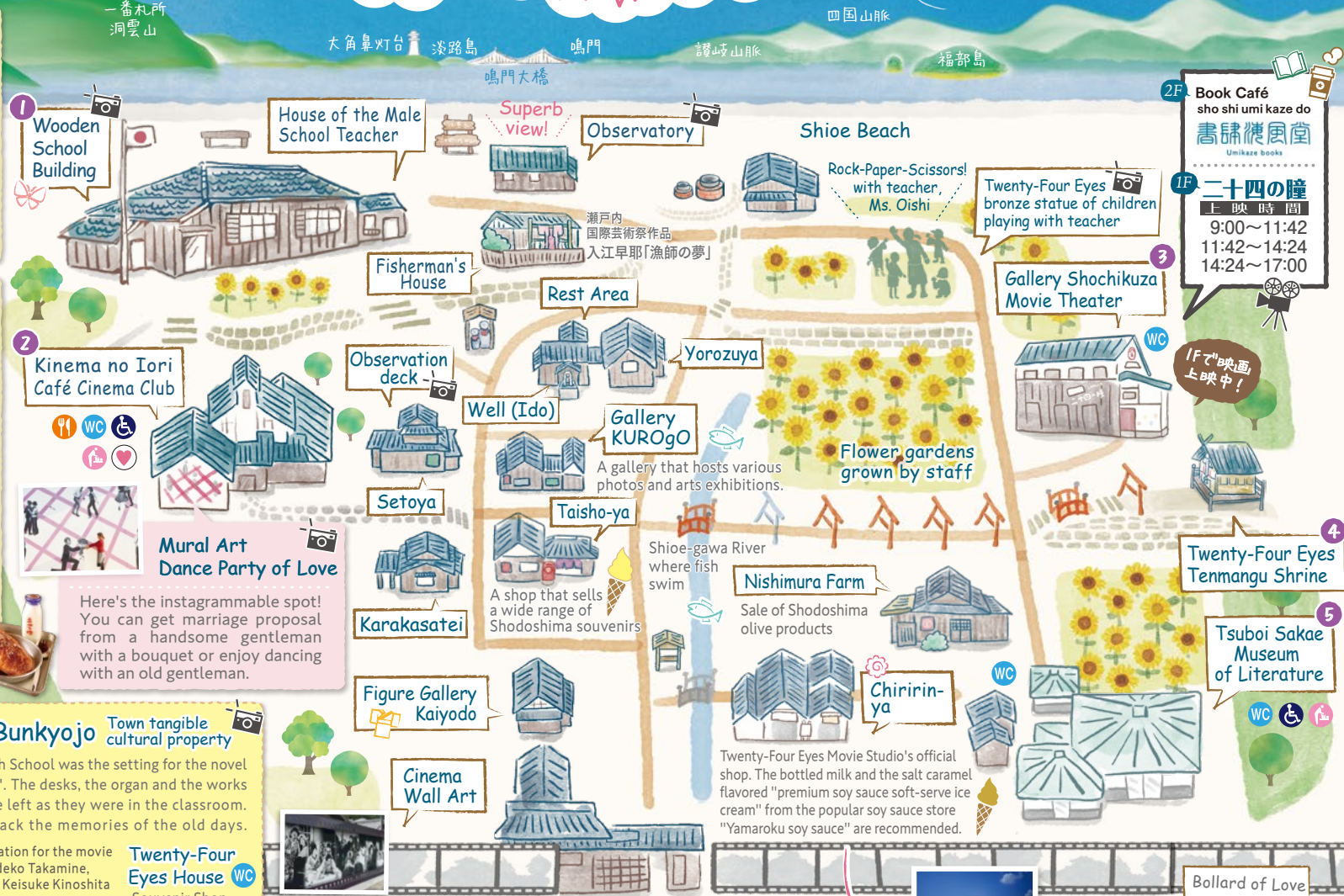


Twenty-Four Eyes Movie Studio

The village of Showa era is recreated where the movie 'Yokame no Semi (Cicada on the Eighth Day)' and the masterpiece of Sakae Tsuboi's 'Twenty-Four Eyes' as well as various dramas and commercials are filmed.



1 Movie set of Nouma Jinjo Elementary School Tanoura Branch. You will find the view of Seto Inland Sea outside of the window tranquilizing.



2 A gallery where you can be surrounded by the atmosphere of Showa Era and see images and photos of Japanese movies. It is a space where you can enjoy the nostalgic Showa era "School Lunch Set" and Shodoshima's popular and local's favorite food "Hishio-don" in the retro atmosphere surrounded by the folk materials of Shodoshima.

1 Wooden School Building

House of the Male School Teacher

Observatory

Shioe Beach

Fisherman's House

Rest Area

Rock-Paper-Scissors! with teacher, Ms. Oishi

Twenty-Four Eyes bronze statue of children playing with teacher

Gallery Shochikuza Movie Theater

2 Kinema no Iori Café Cinema Club

Observation deck

Yorozuya

Gallery KUROgO

Flower gardens grown by staff



Mural Art Dance Party of Love

Here's the instagrammable spot! You can get marriage proposal from a handsome gentleman with a bouquet or enjoy dancing with an old gentleman.

Setoya

Well (Ido)

A gallery that hosts various photos and arts exhibitions.

Taisho-ya

Shioe-gawa River where fish swim

Nishimura Farm

Sale of Shodoshima olive products

Twenty-Four Eyes Tenmangu Shrine

Tsuboi Sakae Museum of Literature

Figure Gallery Kaiyodo

Cinema Wall Art

Twenty-Four Eyes Movie Studio's official shop. The bottled milk and the salted caramel-flavored "premium soy sauce soft-serve ice cream" from the popular soy sauce store "Yamaroku soy sauce" are recommended.

Chiririn-ya

Bollard of Love

Setouchi Art Triennale 2016: art work of Hisakazu Shimizu 'Bollard of Love'

10 minute walk from Eigamura

Misaki no Bunkyojo Town tangible cultural property

The Tanoura Branch School was the setting for the novel 'Twenty-Four Eyes'. The desks, the organ and the works of the children are left as they were in the classroom. They will bring back the memories of the old days.



Filming location for the movie starring Hideko Takamine, directed by Keisuke Kinoshita film director.

Twenty-Four Eyes House Souvenir Shop

700m before Eigamura

Japanese film wall panel art. (Photos provided by Shochiku Co., Ltd.) Total length of 54 meters gives such powerful presence. It brings back the famous scenes in which stars of the silver screen played.

Entrance (Reception)



2F Book Café sho shi umi kaze do 書肆 海風 Umiyake books
1F 二十四の瞳 上映時間 9:00~11:42 11:42~14:24 14:24~17:00

It is on the second floor of a tasteful building that imitates a soy sauce storehouse factory.



A retro movie theater that has the look of a movie theater from the Showa Era. The movie 'Twenty-Four Eyes' is playing. Please enjoy the splendor of Japanese movies on the big screen you can watch comfortably. As a special screening, 'GEKI x CINE', a movie of theatrical troupe Gekidan☆ Shinkansen is playing. Please check the program on the website.



Tenmangu Shrine received a divined spirit from Dazaifu Tenmangu Shrine. The omikuji fortune slip with Shakespeare's famous quote is also recommended.



The museum exhibits furnishings and manuscripts Sakae Tsuboi, author of 'Twenty-Four Eyes', cherished. Also, there are Shigeji Tsuboi and Denji Kuroshima display sections.

- Restaurant WC Toilet AED
- Handicap Bathroom Baby Chair
- Photographic hotspot

You can rent Kasuri Kimono. Figure Gallery Kaiyodo



500yen per suit

Old time play Wooden School Building



free

Feeding Shioe-gawa River



100yen per suit

Asian sheepshead wrasse,



Kobu-chan

Twenty-four eyes Eigamura official shop "Chiririn-ya". Bottled milk and the salted caramel-flavored "Gokujo Soy Sauce Soft" from the popular soy sauce shop "Yamaroku Soy Sauce" are recommended.



Retro Movie Billboard from Showa Period

